

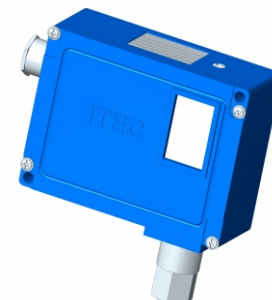
FEATURES

- Fix / adjustable differential
- Field adjustable set point
- Weatherproof to IP 67
- Internal set point lock
- Rigid construction
- Scale provided

APPLICATION

- Marine applications
- Textile machineries
- Power & steel plants
- Furnace applications
- Oil & Gas, Refineries
- Petro-chemicals & Fertilizers
- Cement & Glass industries
- Railway engines & Turbines

High Pressure



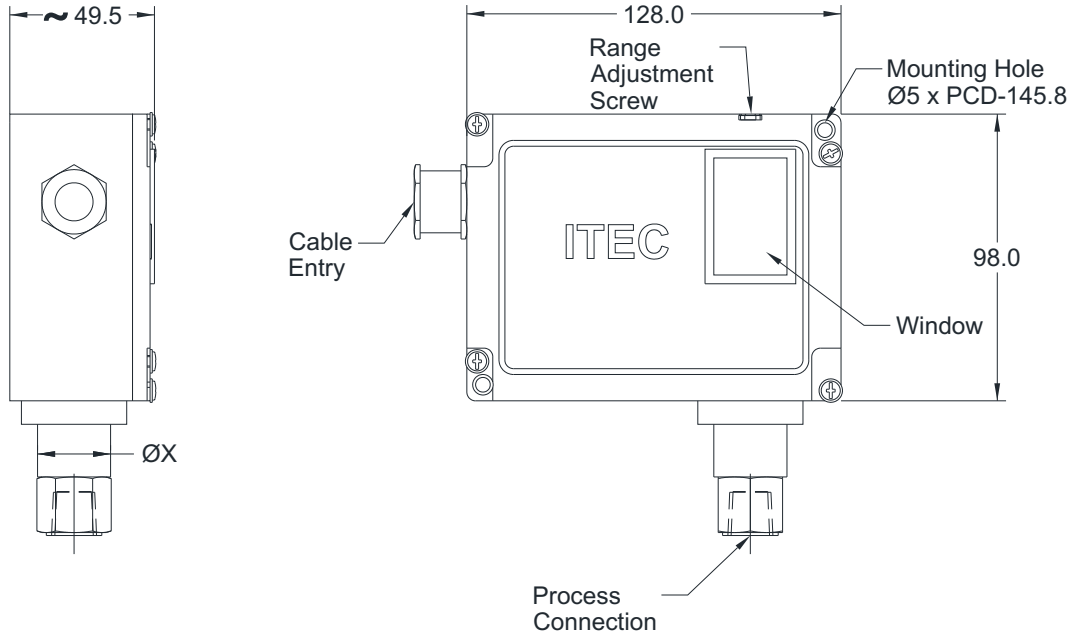
STANDARD SPECIFICATIONS

Repeatability	:	± 1 % F.S
Scale accuracy	:	± 3% F.S
Measurement unit	:	bar
Range	:	Refer "Range Table"
Range adjustment	:	External
Differential	:	Fixed (Standard), Adjustable (Optional)
Mounting	:	Bottom / Panel
Enclosure material	:	Aluminum pressure die cast
Sensing elements	:	SS 316 Piston
Switch	:	1 SPDT Snap action micro switch
Switch rating	:	15A,250 VAC / 0.2A,24 VDC (Standard)
Process connection	:	1/4"BSP(F)
Maximum process temperature	:	150 °C
Ambient temperature	:	-10...60 °C
Cable entry	:	PG.13.5 mm
Set point	:	Between 20 to 80 % F.S for better performance
High voltage strength	:	0.5 to 0.6 KV between open contacts and 2 K V between contact and body

RANGE TABLE

CODE	RANGE
	"bar"
B19	10...100
B21	20...160
B24	25...250
B27	40...400

DIMENSIONAL DRAWING



All dimensions are in mm

Chamber Size	
Range	ØX
10 bar to 250 bar	25 mm

MICROSWITCH SPECIFICATION

DESCRIPTION	RATING		DIFFERENTIAL	TYPE	SWITCH CODE	
	AC	DC			1 No.	2 Nos.
Low deadband / differential	15A/250V, 2A/24V 0.2A/220V	15A/250V, 2A/24V 0.2A/220V	Fix	SPDT	M10	M20
High dead band / differential	15A/250V, 6A/24V 0.25A/220V	15A/250V, 5A/24V 0.03A/220V	Fix / Adjustable	SPDT	M11	M21
Gold plated switch	1A/250V	0.5A/28V	Fix	SPDT	M13	M23
Environmentally sealed silver contact	5A/28V	-	Fix	SPDT	M14	M24
Hermetically sealed silver contact	3A/28V	2A/24V	Fix	SPDT	M16	M26
Hermetically sealed gold contact	1A/125V	-	Fix	SPDT	M17	M27
High DC rating	10A/125V	6A/125V	Fix / Adjustable	SPDT	M18	M28
DPDT	10A/125V, 0.2A/250V	-	Fix / Adjustable	DPDT	M08	-

ORDERING CODES

1. RANGE	B19	9. PROCESS CONNECTION	02B
Refer "Range Table"		02B 1/4" BSP (F)	
2. CHAMBER MATERIAL	NF	12B 1/4" BSP (M)	
NF AISI 316 SS		13B 3/8" BSP (M)	
3. SENSING ELEMENT MATERIAL	MF	14B 1/2" BSP (M)	
MF AISI 316 SS		02N 1/4" NPT (F)	
5. SWITCHING DIFFERENTIAL	S4	12N 1/4" NPT (M)	
S4 Fixed, 2...5%		14N 1/2" NPT (M)	
S5 Adjustable, 5...12.5%		04N 1/2" NPT (F)	
6. SET POINT	S8	A25 1.5" RF 150#	
S8 On Raising		A26 1.5" RF 300#	
S9 On Falling		A27 1.5" RF 600#	
7. MICROSWITCH TYPE	M10	A31 2" RF 150#	
Refer "Microswitch Specification"		A32 2" RF 300#	
8. CABLE ENTRY	J8	A33 2" RF 600#	
J8 PG 13.5 cable entry		10. OTHER OPTIONS	XX
J9 DIN connector		TB Calibration Certificate	
C0 3/4" ET (F)		XF AISI 304 SS tag plate	
C1 1/2" NPT (F)		XV Wall mounting bracket	
C4 4 Pin Connector		XS Mounting bracket with 2" U-clamp	
C7 7 Pin Connector		TC Material test certificate 3.1	
		KE Cable gland, double compression weatherproof, Ni-plated brass	

Ordering Example : S203-B19-NF-MF-S4-S8-M10-J8-02B

COMPATIBLE ACCESSORIES

Diaphragm seal	Gauge cock	Needle Valves
Cooling tower	Snubber	Manifolds
Siphon		

NOTES:

1. Except "Standard" connection, other connections are given through adaptors.
2. The option "TC" covers only wetted parts.
3. Cable gland is available in other materials, contact factory.